



classic[®]
kinect

2023

YOUR GUIDE TO:

Portable Home Plans



Why Choose Classic Kinect?



The Process



Customization



1 Bedroom



2 Bedroom



3 Bedroom



4+ Bedroom



Why choose Classic Kinect?

Transportable Homes: The Perfect Solution for Modern Living.

Why Choose Classic Kinect Transportable Homes?

Because we've got all your living needs covered, and then some! Our homes are the epitome of convenience and style, giving you the freedom to live life on your terms.

Looking for a starter home that won't break the bank? We've got you covered. Need a cozy space for your retiring grandparents, where they can still be independent while helping with the grandkids? Look no further. For young adults studying or saving up for a dream home, our transportable homes provide the perfect pad for an independent lifestyle. Plus, if you're a business owner looking for staff quarters that offer comfort and flexibility, Classic Kinect Transportable Homes are your go-to solution.

Don't settle for anything less. It's time to embrace a living solution that ticks all the boxes. We have several plans designed to suit your section and your needs. Every Kinect home is backed by a 10-year warranty, so all you need to worry about is the perfect location.

The Process



STEP 1. **SELECTING A PLAN** **& PRICING ESTIMATE**

You have a piece of land ready for a Classic Kinect transportable home. The first step in the process is selecting from our stylish range of plans. Understanding the space you have is important at this stage and this will guide your selection based on a size that works for you.

Once you have chosen your premium, low-maintenance home from our full range of stylish floor plans, our consultant will work with you to ensure the home will fit on your site. You will receive product options along with estimates of the elements you'll need to complete after the house has been transported to site.



STEP 2. **SITE SUITABILITY** **& CONTRACT**

Our Building Consultant will complete a site evaluation and our design team will produce a Scheme Plan (which outlines your site, your house in position and the levels of your land). Our designers will also confirm the climate zones your site falls within.

Our contracted house removal specialists will visit your site to confirm there's suitable access to deliver your home. You'll then be presented with the plans, contract documentation and fixed build price. You also get to choose colours and fittings for the build!





STEP 3. **BUILDING CONSENT**

Once you've signed the contract, paid the deposit and confirmed your colour scheme, Kinect will prepare the plans and documentation for building consent to commence the build at our yard.

It is your responsibility to acquire an engineer's report for soil and/or drainage designs (if required), then armed with the site and house plans provided by Kinect, you will need to apply for the building consent from your local council for the siting of the home.



STEP 4. **WE BUILD**

Now the red-tape is dealt with and you have received your building consent, your first stage payment will be due. That means it is time to start building in our yard.

Classic Kinect works on a progress payment model and further payments are required throughout stages of the build, with the final payment due on completion.



STEP 5. **TRANSPORT**

When your house build is completed at the yard, you will need to have any required site access work completed and receive an approved site building consent from your local council. Once we confirm this is in place, we will deliver your new home to you.



STEP 6. **CONNECTIONS & CCC**

Now your home is in its location, it is time to engage your local contractors to connect your power, portable & wastewater, decks and driveway.

You'll also need to apply for a code of compliance inspection with your local council.



STEP 7. **MOVE IN**

Your new home is ready to go, you can begin your landscaping, furnish your dwelling, move in and enjoy!





We have 14 floor plans with
customisable appearance,
Giving you 336 different options!

Customization



choose your
FLOOR PLAN
14 options available



choose your
CLADDING
3 options available



choose your
ROOF STYLE
2 options available



choose your
COLOUR WAY
4 options available

1 Bedroom



Long Bay

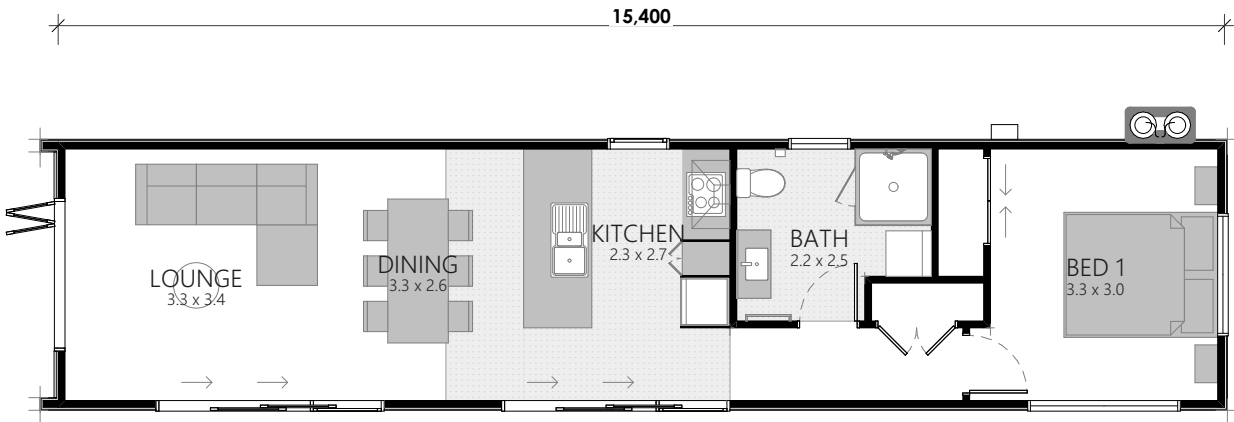
Priced from
\$218,891

1 | 1 | 1 55.5 m² O/C O/C is approximate over cladding size.

This stylish unit is designed and built offsite and then dropped into your space, whether that's beach, mountain or meadow.

This stunning plan makes the best use of open-plan living, while the use of glass ensures light-filled spaces for great views.

Artist impressions only



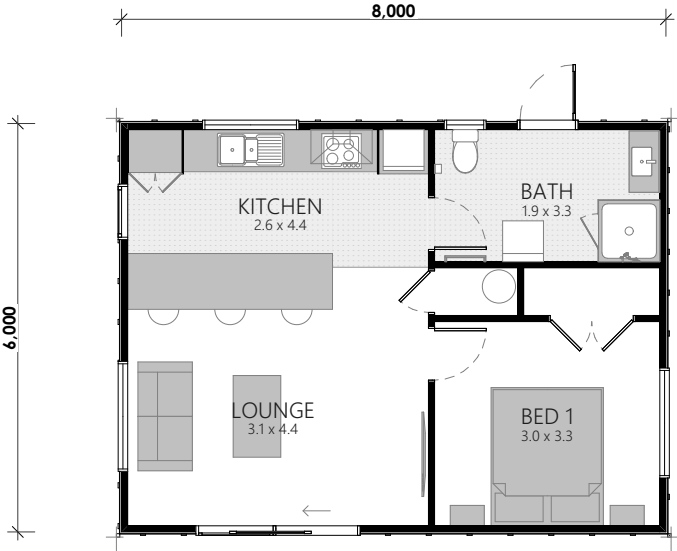
Alderman

Priced from
\$189,436

 1 |  1 |  1 **49.4 m² O/C** O/C is approximate over cladding size.

This compact 1-bedroom unit is ideal for a beach retreat, granny flat, or staff accommodation.

Its compact design offers a small footprint of less than 50m² but the open plan flow from kitchen to dining ensures space is maximized.



Artist impressions only



2 Bedroom

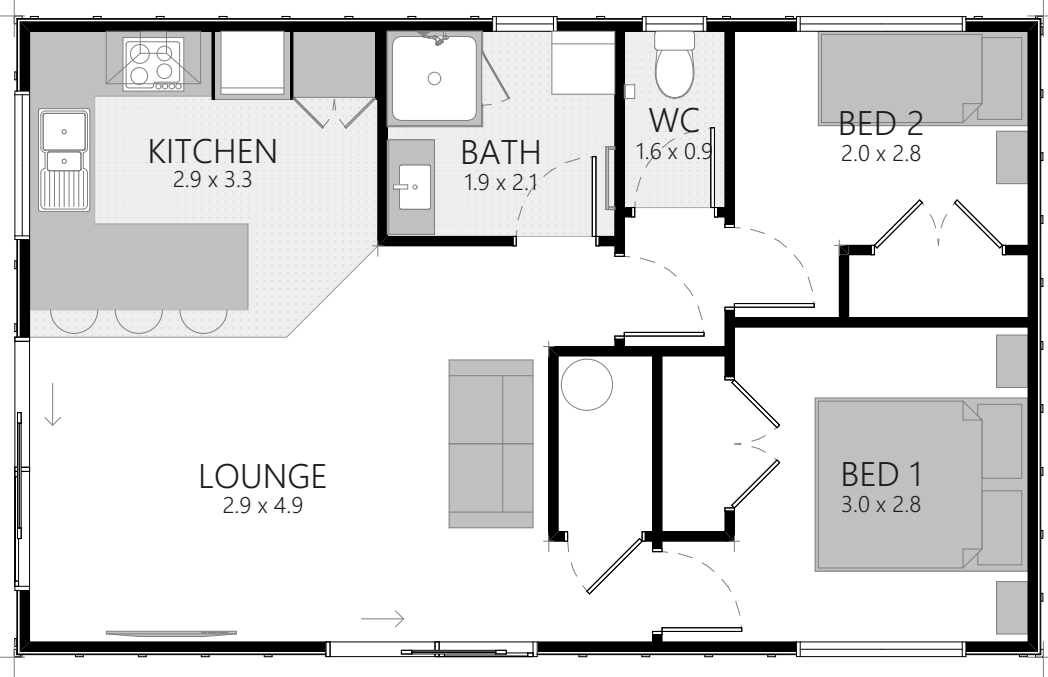


Chatham

Priced from
\$201,977

2 | 1 | 1 59.9 m² O/C O/C is approximate over cladding size.
Measurement refers to style 1b

A smaller footprint to suit a tighter space. While this two-bedroom floorplan offers a smaller footprint, it has all the advantages of a classic two-bedroom home.



Artist impressions only



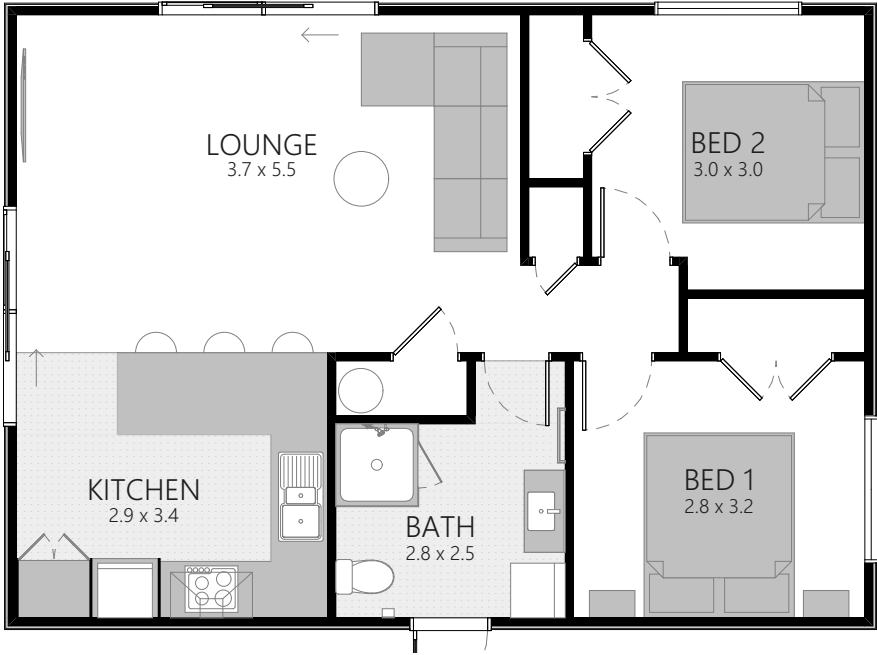
Mercury

Priced from
\$213,205

2 | 1 | 1 66.4 m² O/C O/C is approximate over cladding size.
Measurement refers to style 1b

This classically laid out plan allows ample space for two bedrooms which would be perfect as a starter home for a young couple.

This plan offers an open-plan living space, while glass doors ensure light-filled spaces and great views.



Artist impressions only



3 Bedroom



Karewa

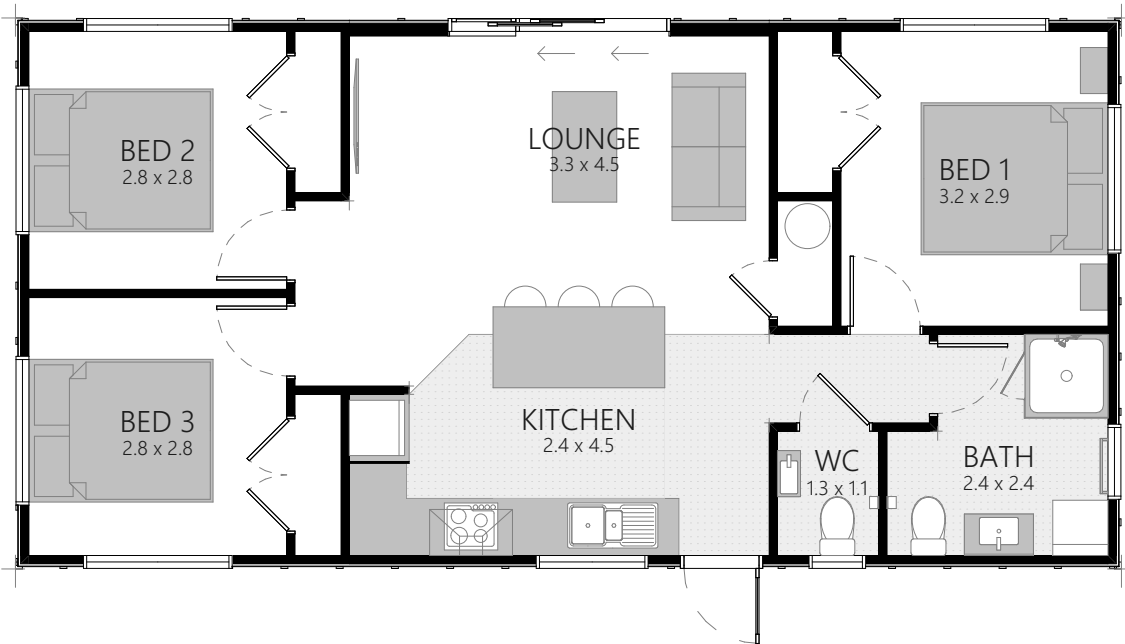
Priced from
\$222,963

3 | 1 | 1

71.9 m² O/C O/C is approximate over cladding size.
Measurement refers to style 1b

Another versatile floorplan built for the modern family; compact and neat.

The open-plan living area flows seamlessly from the lounge to the kitchen to your dining area, while the sliding doors offer a harmonious connection to the outdoors.



Artist impressions only



Omaha

Priced from
\$223,791

3 | 1 | 1 **71.8 m² O/C** O/C is approximate over cladding size.
Measurement refers to style 1b

This clever design optimizes every square foot, providing ample living space while minimizing maintenance. With versatile layouts and thoughtful storage solutions, this home caters to the needs of modern families seeking a spacious living environment.



Artist impressions only



Motuopuhi

Priced from
\$284,968

3 | 1 | 1

109.7 m² O/C O/C is approximate over cladding size.

This beautiful 3-bedroom home offers style and class in a well-built design.

The main bedroom has an ensuite as well as a walk-in wardrobe. The large fully equipped kitchen includes a pantry and enough space for shared family cooking and dining. The ideal home for lifestyle and entertainment.



Artist impressions only



Moturiki

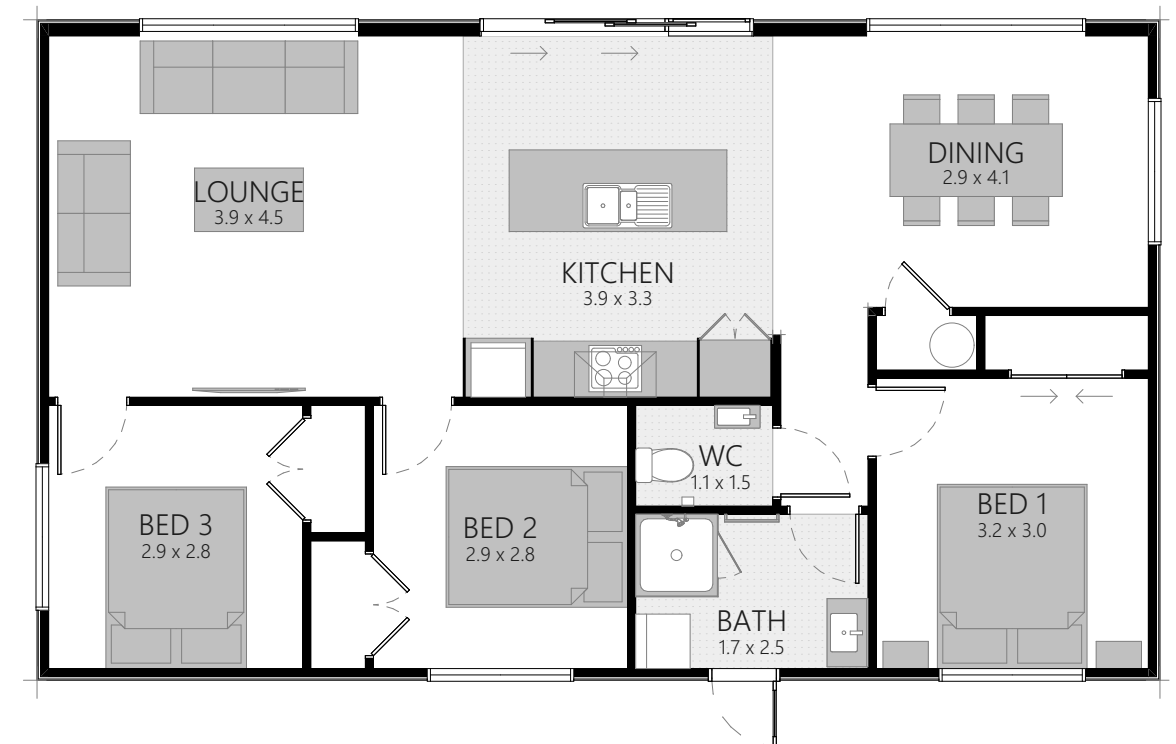
Priced from
\$238,547

3 | 1 | 1

90.6 m² O/C O/C is approximate over cladding size.

A solid and practical home with bedrooms at the rear and open plan living at the front.

This sought-after design offers excellent value as a family home, farm accommodation or even a rental investment on your land.



Artist impressions only



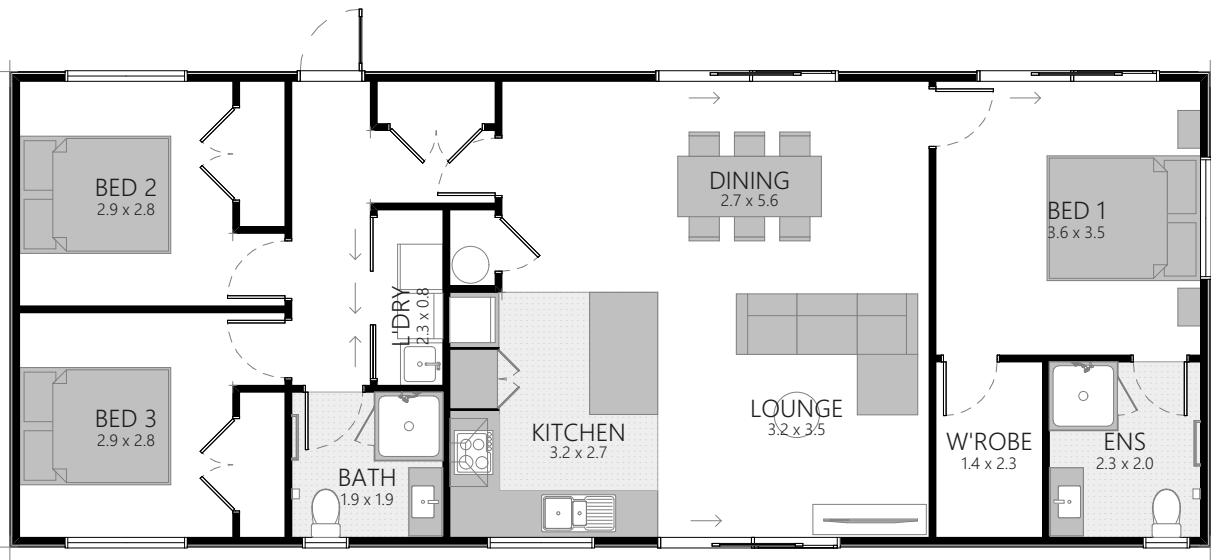
Rangitoto

Priced from
\$266,571

3 | 1 | 1 100.5 m² O/C O/C is approximate over cladding size.

This home offers delightful open plan living with a centrally located kitchen, living room and dining areas.

The master bedroom includes an ensuite and walk-in wardrobe, while the other two large bedrooms include a generous space for the kids or extra guests - this is perfect for the family who enjoy entertaining.



Artist impressions only



Rata

Priced from
\$240,164

3 | 1 | 1

90.6 m² O/C

O/C is approximate over cladding size.

Our stylish home that provides space to grow the family or move in as you are.

Modern & low maintenance, this home has been cleverly designed to cater for all your needs, with all the must-haves included - open plan living, 3 spacious bedrooms, separate laundry, bathroom and toilet.

Artist impressions only



Long Bay Extended

Priced from
\$393,767

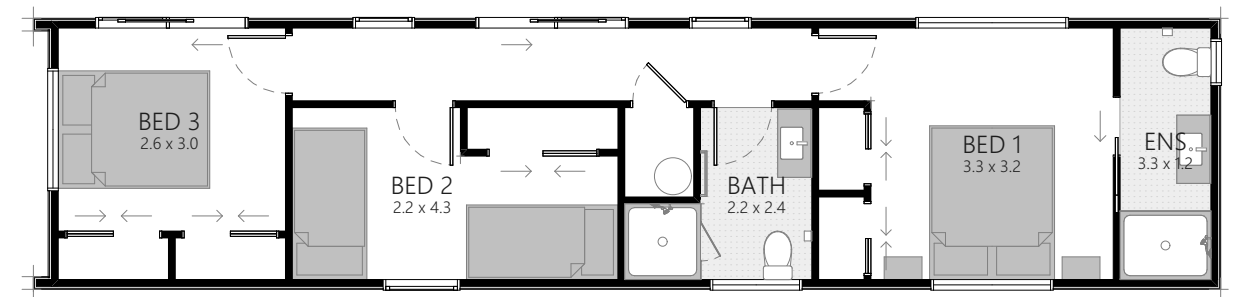
3 | 3 | 1

110.9 m² O/C

O/C is approximate over cladding size.

Sleek style in a modular design, the Long Bay Extended transportable unit builds on the stylish Long Bay plan, adding three generous bedrooms, an en-suite bathroom, open-plan living, a media room and more.

Artist impressions only



4+ Bedroom



Rima

Priced from
\$261,123

4 | 1 | 1 106.7 m² O/C O/C is approximate over cladding size.

With ample living space, this design is perfect for your first home, bach or family unit on your existing land.

4-bedrooms, separate facilities, and a gorgeous open plan living lay-out.
The low maintenance home has been built using only quality materials and is ready to move into.



Artist impressions only



Tuhua

Priced from
\$272,205

4 | 1 | 1

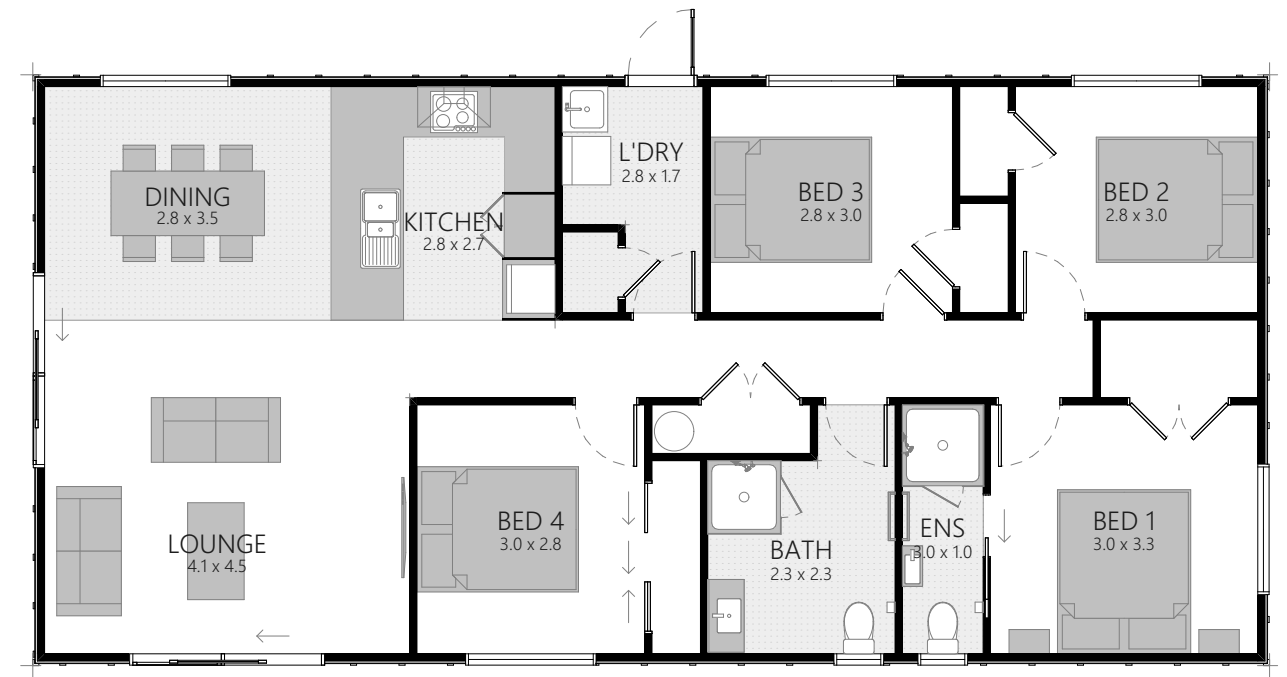
111.9 m² O/C

O/C is approximate over cladding size.

This spacious 4-bedroom family home is perfectly suited to the growing family.

The centrally situated dining, kitchen and living area lends itself to family time and entertaining. The glass sliders could open onto a wrap-around deck providing a perfect indoor-outdoor living space.

Artist impressions only



Rakura

Priced from
\$317,515

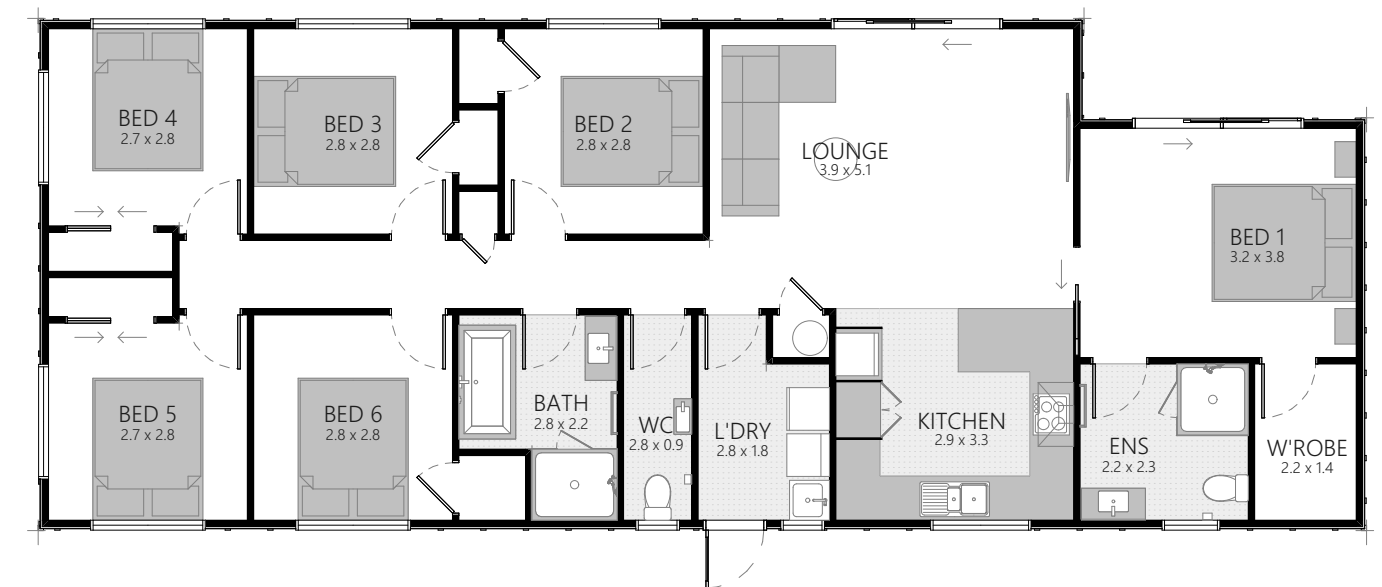
6 | 2 | 1

129.2 m² O/C

O/C is approximate over cladding size.

Another spacious and classically functional home that has been stylishly designed to cope with a growing family or staff quarters.

The main bedroom offers an ensuite and is separated from the other five bedrooms by the open-plan kitchen and lounge. The living spaces open out onto the outdoors which is designed to provide the perfect indoor/outdoor flow.



Artist impressions only





Aaron McGarva 021 724 031
info@classickinect.co.nz

CLASSICKINECT.CO.NZ